

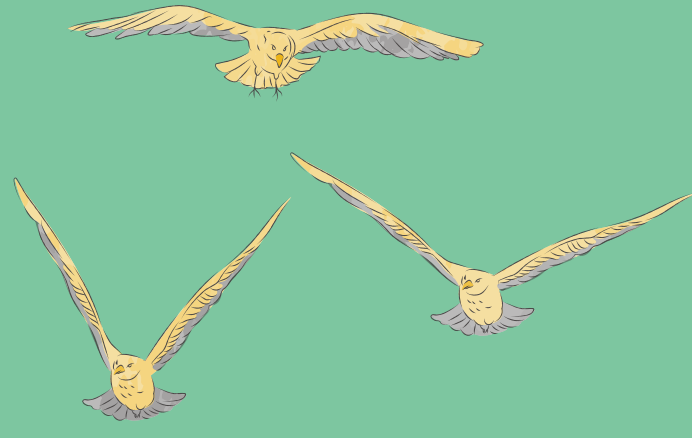


# NatureHelm BIODIVERSITY DATA INTEGRATION AND ANALYTICS



## GOAL

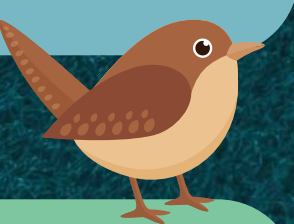
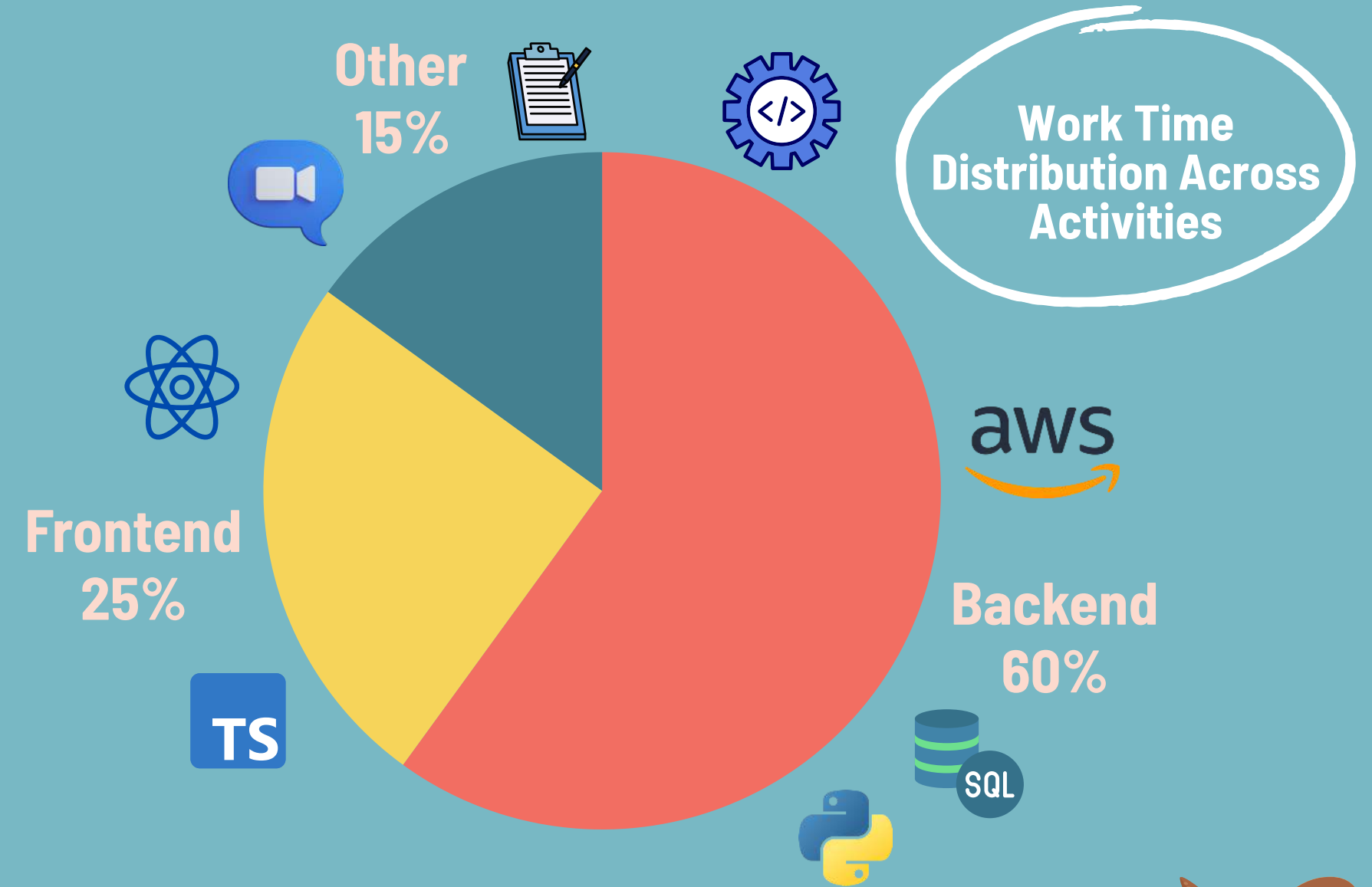
**Main Aim of Platform:** Empower businesses with **biodiversity insights** for informed, sustainable decisions through efficient data collection and analysis.



### Project Goals

- 1 Data Integration and Processing:** Assess, extract, and integrate vegetation data analytics into the platform.
- 2 Visualization Development:** Create visualizations to help users interpret and utilize insights effectively.
- 3 Platform Enhancement:** Expand platform capabilities to help businesses in meeting reporting requirements.

## ACTIVITIES



## STAKEHOLDERS

Corporations/  
Businesses

NatureHelm  
Executive Team

Government  
Regulatory Bodies

Other End-users  
(e.g. farmers)

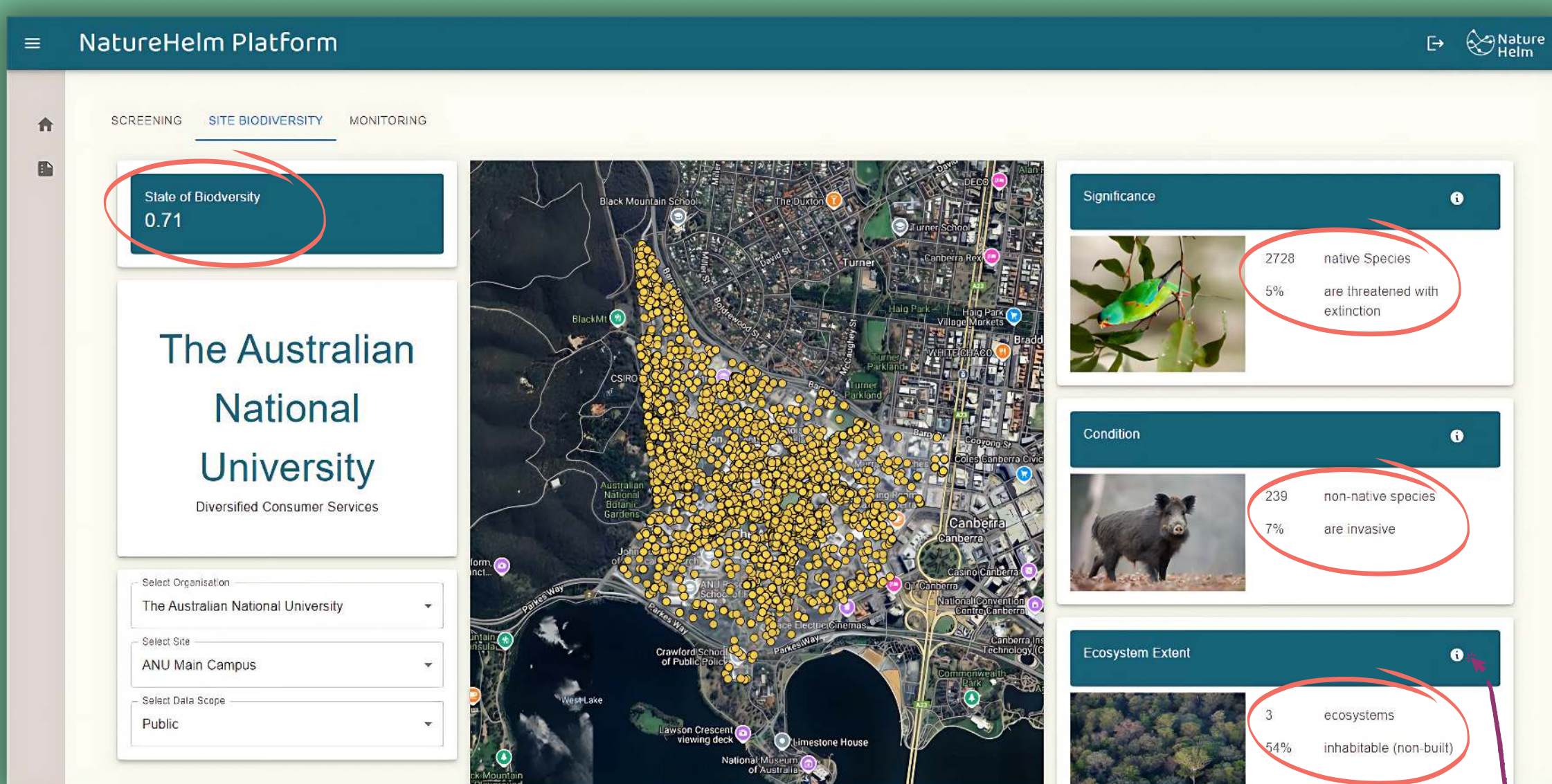
Suppliers

Investors

## IMPACTS

- This project **increases NatureHelm's product value** by integrating several advanced data analytics, which expands the platform's functionality and appeal.
- The project **enhances functionality for users** by offering deeper biodiversity insights, improving decision-making and ensuring compliance with regulations.
- This **aids government** compliance with biodiversity regulations and supports conservation through improved data reporting and insights for policy-making.

## OUTCOMES



### Biodiversity Scoring

- Annotated with circles
- Provides a comparable score about property sustainability
- insights into species richness, threats, and habitat health

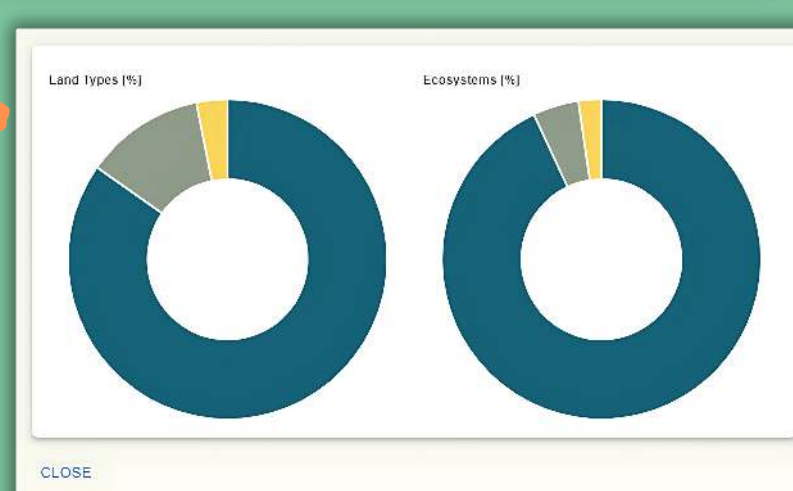
### Delivered:

- **3 x Backend Development:** algorithm, ELT (Extract-Load-Transform) process, AWS (Amazon Web Services) integration, Application Programming Interfaces (APIs), Soda Tests
  - **2 x Frontend:** Responsive user interface (UI) chart, Jest tests
  - Huge performance optimization
  - General testing and documentation
- 200+% More Delivered!**



### Vegetation + Ecoregions Data Analytics

- **Interactable**
- Shows land use, vegetation, water features, and precise classification at a glance
- Shows dominant ecological features



Watch video pitch



Visit NatureHelm

Arjun Raj (u7526852@anu.edu.au)  
The Australian National University

### Acknowledgement

Logos for NatureHelm, AWS, TypeScript, and Python sourced from official websites.